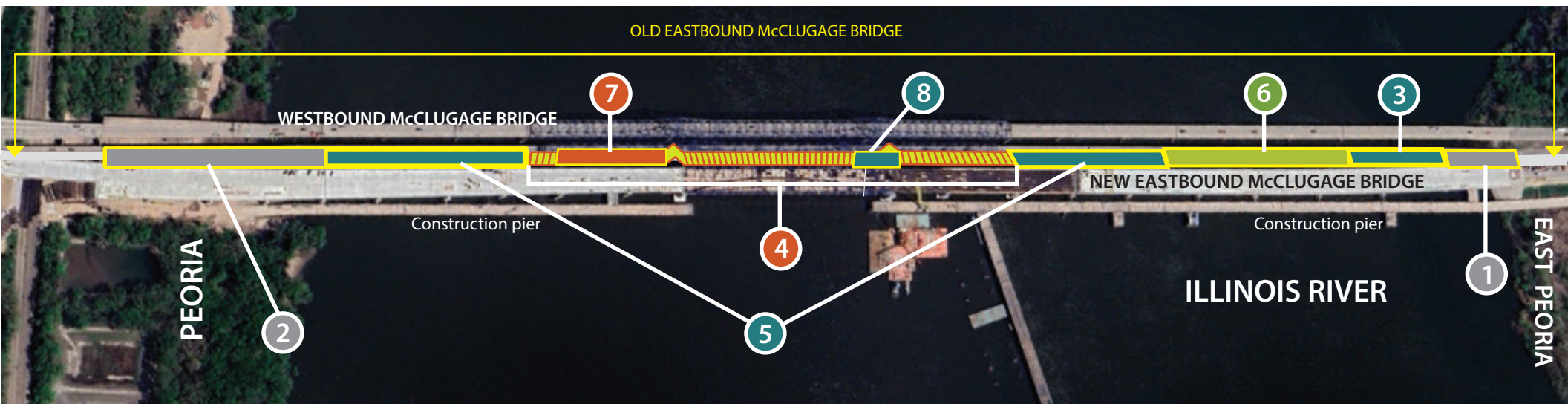




Demolition schedule for the old eastbound McClugage Bridge

To safely remove the old eastbound McClugage Bridge, a series of eight carefully coordinated events using explosives will occur. Each blast event will happen between 9:30 and 10 a.m. on a designated weekday, prompting full bridge closures of both eastbound and westbound spans for about an hour. Exact event dates will be announced via press releases, the project website and social media closer to the scheduled week. *(Dates subject to change due to weather conditions.)*

- March 27, **BLAST 1** demolished the steel girders of spans 27-30 on the East Peoria side of the bridge.
- April 9, **BLAST 2** demolished part of the underdeck truss toward the Peoria side of the bridge.



On April 16	Week of April 28	Week of May 5	Week of May 12	Week TBD	Week TBD
BLAST 3 will demolish part of the steel girders of spans 24-26 (East Peoria side).	BLAST 4 will be the largest of the demolition events, taking down the main truss.	BLAST 5 will demolish the steel girders of spans 18-26 (East Peoria side) AND the remainder of the underdeck truss (Peoria side) just left of the main truss.	BLAST 6 will demolish the remaining steel girders of spans 18-26 (East Peoria side).	BLAST 7 will demolish concrete piers 11 and 12.	BLAST 8 will demolish concrete pier 13.

Follow us online at McClugageBridge.com for the latest updates!

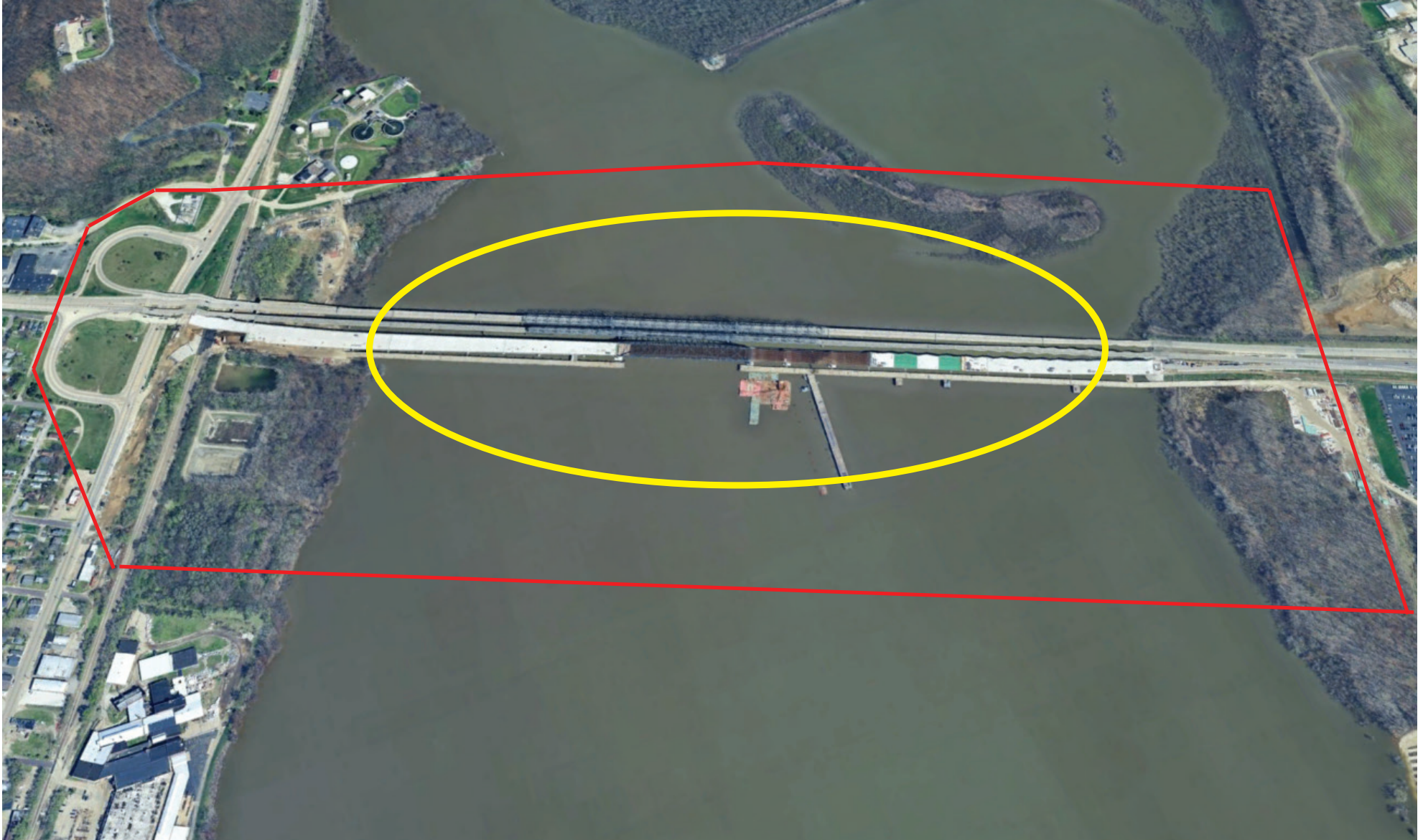


*Updated 4/11/2025



McClugage Bridge restricted areas during demolition

Security checkpoints will be in place at road closures both upstream and downstream along the Illinois River and other key locations along the perimeter. The red outline shows the restricted perimeter for the demolition events of steel and the yellow shows the restricted perimeter for the demolition events of concrete.



Follow us online at [McClugageBridge.com](https://www.McClugageBridge.com) for the latest updates!





McClugage Bridge closures during demolition

To safely remove the old eastbound McClugage Bridge, a series of six carefully coordinated events using explosives will occur. Each event is scheduled to begin between 9:30 a.m. and 10 a.m. on a designated weekday, prompting full bridge closures of both eastbound and westbound spans for about an hour. Exact event dates will be announced via press releases, the project website and social media closer to the scheduled week. **(Dates are subject to change due to weather conditions.)** These road and ramp closures marked in yellow on the maps below will occur during each demolition event.

